

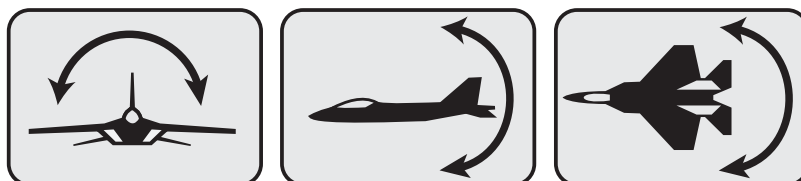
Gyro Program Box

GPB-1

Ver.4.1

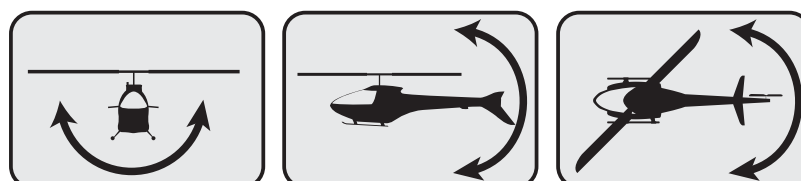
Software Update Functions

GYA 553



CGY 760R

CGY 755



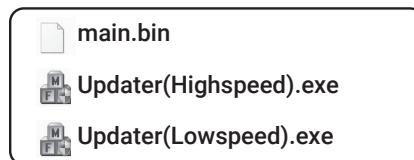
GPB-1 Software Update Procedure

GPB-1 UPDATE

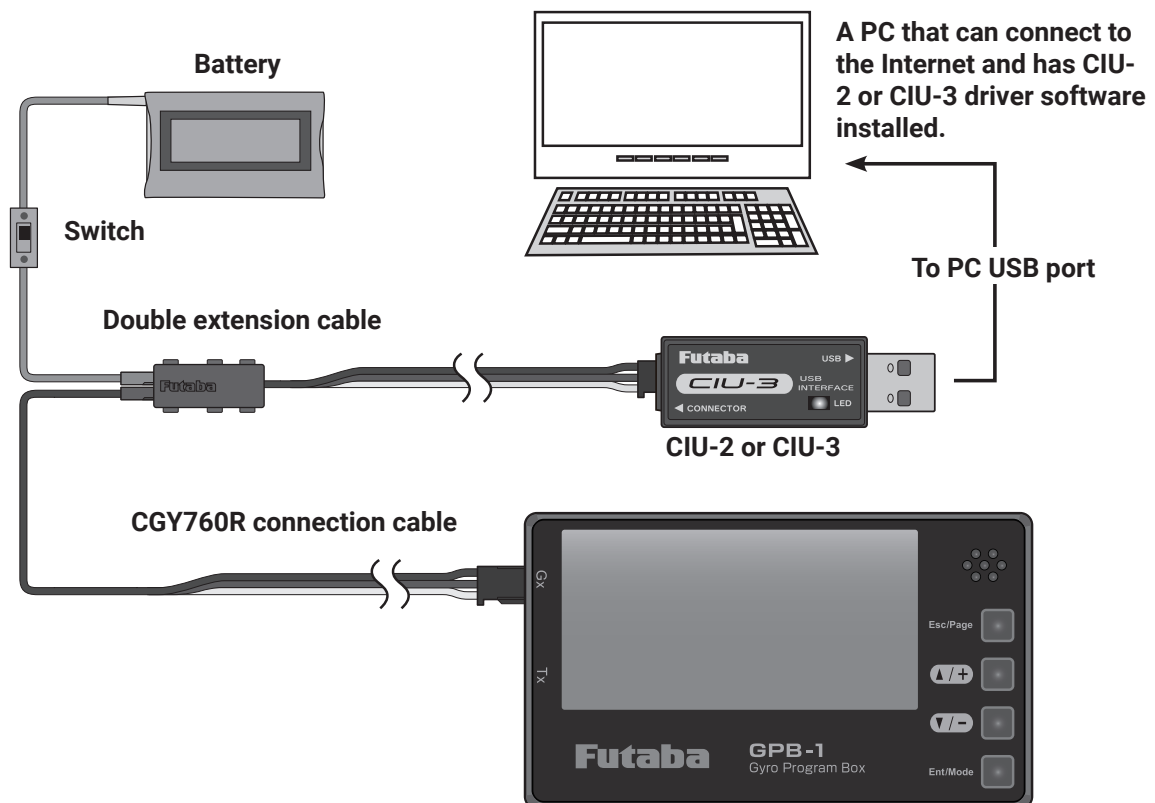
The GPB-1 can be updated from PC using CIU-2 or CIU-3.

- * The following optional products are required for the update.
 - CIU-2 or CIU-3
 - Cable for CGY760R / GY701 / GY520 or DSC cable for update
 - Receiver battery

1. Download the CGY760R update file from our website or your local distributor's website.
2. Extract the zip file on your computer.



3. Connect as shown in the figure.



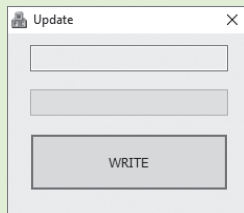
PC side

4. Start an executable file by a PC.

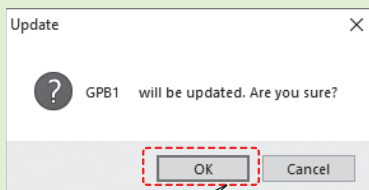
CIU-3 Updater(Highspeed).exe

CIU-2 Updater(Lowspeed).exe

Double
-click

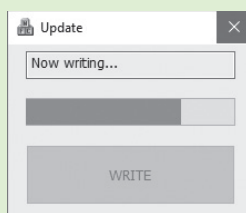


WRITE



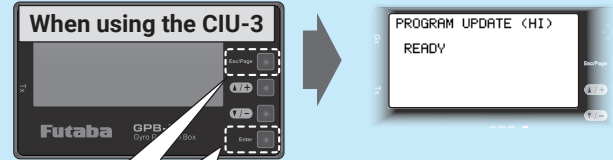
Click [OK]

OK



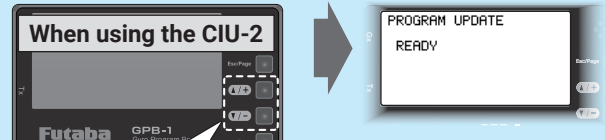
GPB-1 side

5. When using the CIU-3, hold down the [Enter] and [Esc/Page] keys of the GPB-1 and turn on the power. Release the [Enter] and the [Esc / Page] keys when the backlight of the screen lights up.

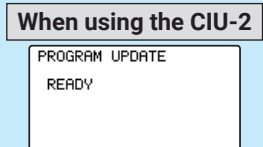
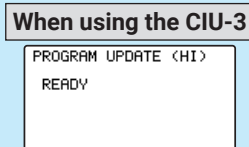


Press the [Enter] and [Esc/Page] keys next turn ON

When using the CIU-2, hold down the [▲/+] and [▼/-] keys of the GPB-1 and turn on the power. Release the [▲/+] and [▼/-] keys when the backlight of the screen lights up.

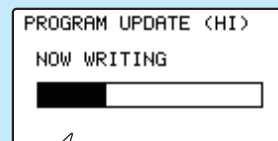


Press the [▲/+] and [▼/-] keys next turn ON



⚠ CAUTION

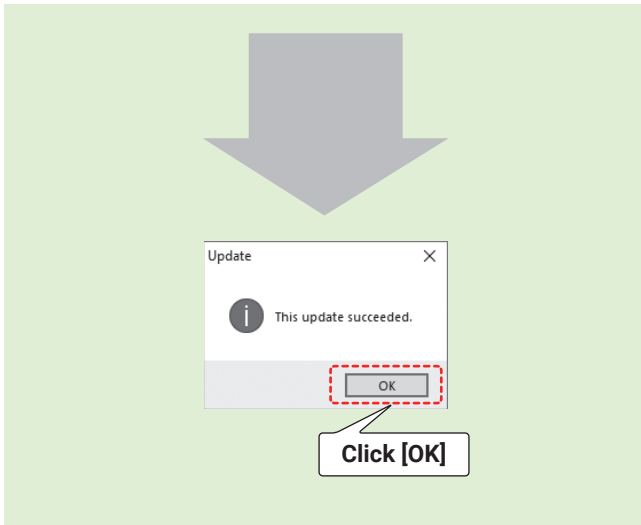
⊘ Do not turn off the power or remove the battery while updating. GPB-1 may be damaged.



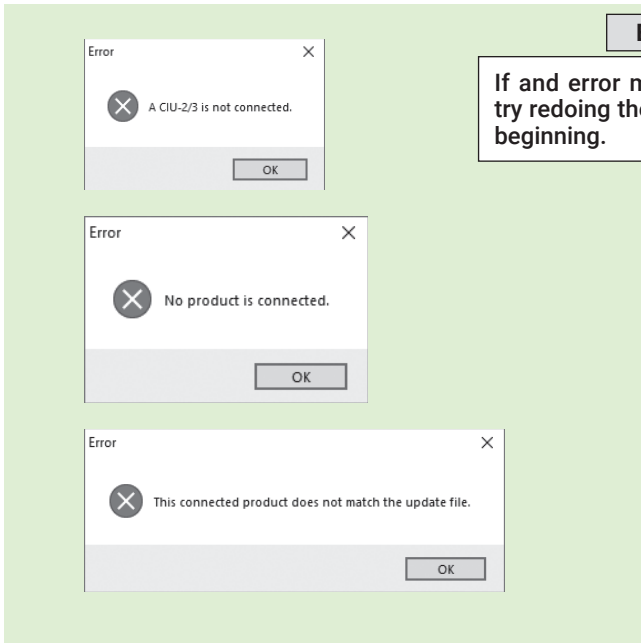
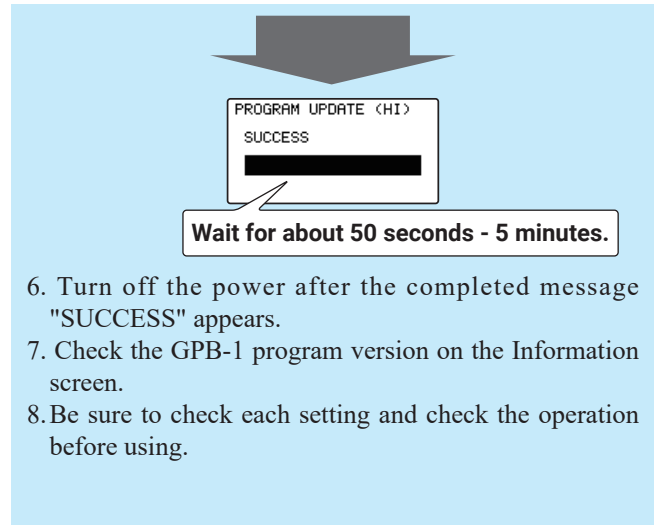
Wait for about 50 seconds - 5 minutes.

Don't turn on the power !

PC side

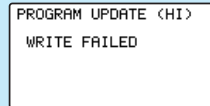


GPB-1 side



Error

If and error message appears, try redoing the update form the beginning.



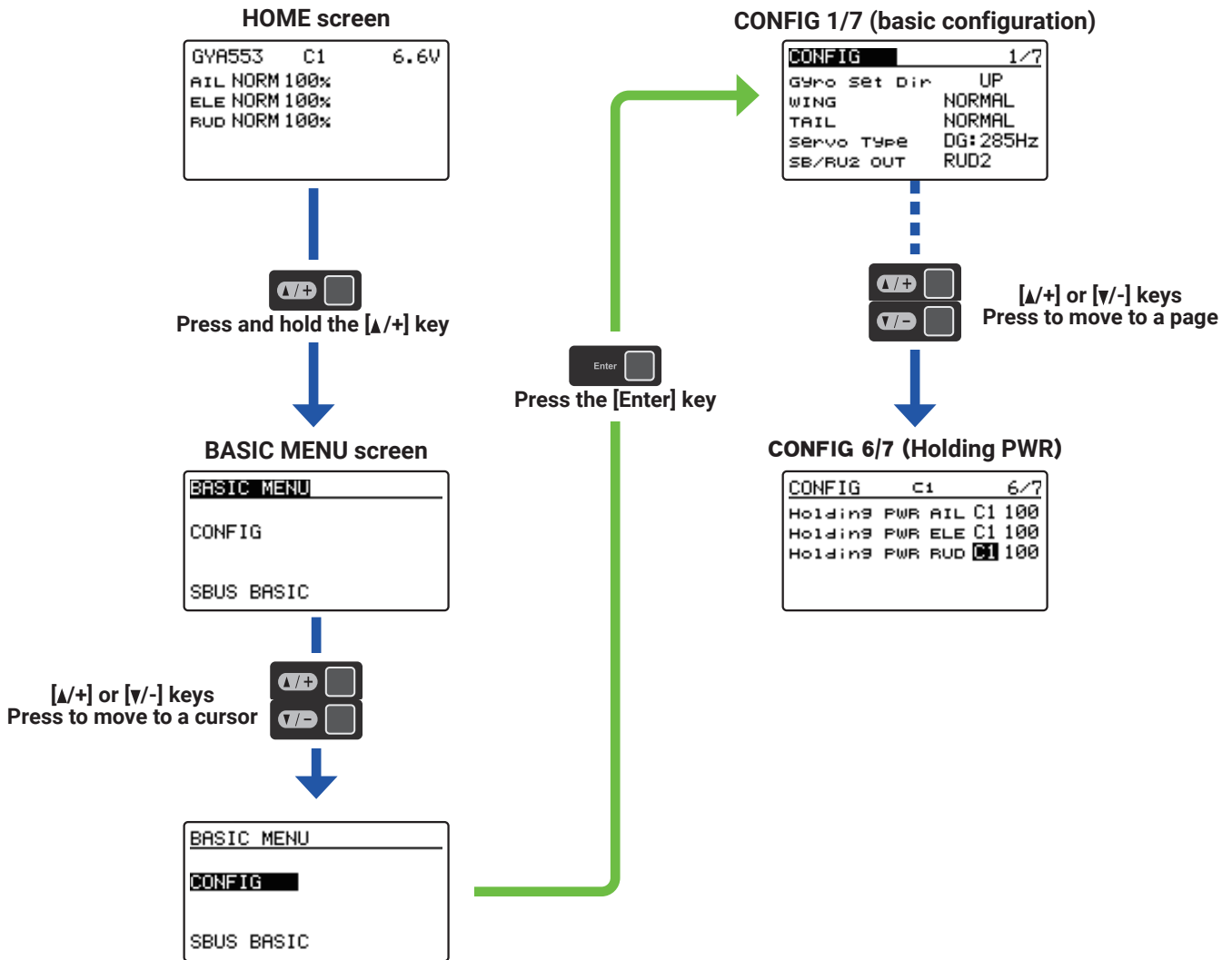
If the cable disconnects or a contact failure occurs during the update, the update stops halfway. In that case, please try updating again from the beginning.

If the GPB-1 fails to update or does not start, please have it serviced.

GYA553 --- Added AIL / ELE / RUD "Holding PWR" setting to parameter setting

You can adjust the attitude holding force of the aircraft in AVCS mode.

Decreasing the value weakens the holding power and makes the operation feeling closer to the normal mode.



Refer to GPB-1(V4.1) GYA553 Setting manual

CGY760R / 755 --- GOV Basic Menu 5/6 "Rev. Sensor" screen

Even if the "SBUS 2rpm out" setting is set to INH in the GOV basic menu 6/6 of the CGY760R / 755, the rotation speed sensor test is now possible on the "Rev. Sensor" screen.

