

# RADIO CONTROL BAIT BOAT

## INSTRUCTION MANUAL

Model No.: 3151



## BAIT BOAT INTRODUCTION

### SPECIFICATIONS

Length: 556mm  
Width: 240mm  
No-load weight: 1650g  
Full-load weight: 2150g  
Radio range: 200meter  
Bait weight per each launch: 500g  
(Remark: only dry bait used, dimension not exceed 15mm bait)  
No-load direct line speed: 1.2m/s  
Full-load direct line speed: 1m/s  
Turning radius: 1meter

### FUNCTION INTRODUCTION

- Used as bait launching, Load 500g bait per each time, radio control boat to any position within 200 meter range to release bait. Reload bait and release repeatly.
- Load 1 or 2 hook in hopper to release in any position within 200 meter range.
- Use supplied magnetic pothook to connect with hook at rear of boat, navigate boat within 200 meter range, magnetic pothook disconnect with boat when fish bite hook, use fishing rod to take fish back.
- Can install wireless underwater camera(Part No.:3901,optional purchase part,not included) on boat, to detect water depth and find fish, View the fish biting hook through display to have more fun for fishing.
- Can install small wireless fish finder(commercial available in market, optional purchase part, not included) inside boat(Note: bait boat designed with installation platform and power supply 12V 1A for fish finder ). Can also attach the wireless WIFI fish finder(commercial available in market, optional purchase part, not included) to bait boat.

### IMPORTANT NOTICE

- Required 4pcs AA alkaline batteries for transmitter.
- Boat power battery charging time: need around 7 hours for fully charge. A fully charge battery can continuously drive boat around 1.5hours. For example, can back and forth to release bait 50 times within 50 meter distance from shore.
- Can use bait boat at night, boat installed with navigation LED lights(Forward blue LED, rear red LED) switch on LED on receiver box inside boat.
- Low battery warning: Navigation LED lights designed as the low battery warning light. When battery voltage is too low, no matter you switch on LED lights or not. The Navigation LED lights will keep blinking. The boat battery will still allow you have 10 minutes time to drive boat back(driving distance around 400meters).
- Boat designed to drive quietly, in order not to scare fish.
- Each components of boat are designed as modular construction. It is easily to replace each component when you purchase the spare parts base on last page of manual.

### SAFETY NOTICE

- Read manual before you use this bait boat, Follow manual's instruction to use bait boat properly.
- This boat is not a toy, It is not intended for persons under 14 years of age.
- Keep this boat away from children under 3 years old because small parts can be swallowed.
- Do not use this boat when in strong wind, wave and rain.
- Do not use this boat in the water where there are many obstacle and waterweeds.
- Do not drop this boat during transportation to prevent damage.

# BAIT BOAT INSTRUCTIONS



Boat bag included, place boat,transmitter and batteries inside bag for easy transportation.

## INSTALL BATTERIES IN TRANSMITTER



A: Purchase 4pcs AA alkaline batteries (not included)  
B: Open battery compartment on bottom of transmitter



C: Install batteries base on correct polarity  
D: Close battery compartment



E: Switch on transmitter, Red light is on, means transmitter is working now.(Note:Switch off transmitter when not use boat to save transmitter battery)

## CHARGING BOAT BATTERY

DO NOT leave battery unattended during charging.  
DO NOT leave battery plugged into the AC charger any longer than 8 hours maximum.  
DO NOT leave battery on charge overnight.



A: Take out boat battery and AC charger from packaging box.



B: Plug in AC charger on power outlet



C: Connect DC connector with either one of the power socket in junction box.



D:Connect the battery's DC connector with the other one of the power socket in junction box.



E: Need around 7 hours for fully charging battery.when battery slightly warm, disconnect battery from AC charger, disconnect AC charger from power outlet.

## INSTALL BATTERY IN BOAT



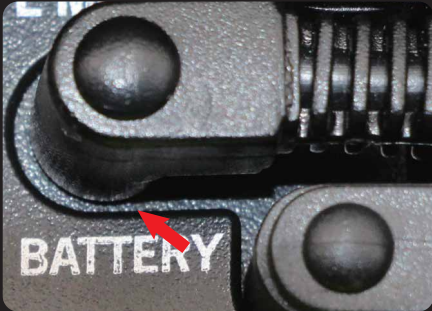
A: Press down black button on hatch.



B: Pull out hatch.



C: Place battery in the mounted position inside cabin. Secure battery with velcro strap.



D: Plug battery DC connector into power socket in receiver box.



E: Switch on transmitter firstly (Transmitter red light on), then switch on "POWER" on receiver box (receiver box blue light stay bright)  
F: Now transmitter connect with boat, proceed next step testing.



G: Follow photo to install back the hatch on cabin. Press down hatch align to cabin two mounted slot.

## BOAT FUNCTION TESTING



A: Pull trigger backward, left and right propeller rotate as photo shown. This control drive boat forward. propeller rotate speed will change proportionally base on how you pull trigger.



B: Push trigger forward, left and right propeller rotate as photo shown. This control drive boat backward (reverse). (NOTE: Reverse speed is lower than forward speed)



C: Rotate transmitter wheel in anticlockwise direction, left propeller stop, right propeller rotate as photo shown. This control drive boat steering to left

D: Rotate transmitter wheel in clockwise direction, this control drive boat steering to right.



E: Switch on "LED", forward blue LED and rear red LED will stay bright.



F: Pull the hopper door from back to forth. Until you hear "DA" sound, now hopper door is closed. Push button "D.OPEN" on transmitter, hopper door fully open to release bait.



G: The rotate knob on transmitter is for controlling wireless underwater camera (Optional purchase part, not included). If no installation of camera. This rotate knob is no function.



## INSTRUCTION ON TRANSMITTER SETTING

When transmitter and boat all finish battery installation, switch on transmitter firstly, then switch on receiver box "POWER". If receiver box's blue light blinking (NOT STAY BRIGHT). This means radio control system haven't bind yet to work properly. Follow the steps to BIND transmitter with boat(receiver box).



A: During BIND process, Keep transmitter with boat within 30cm distance. Switch off receiver box "POWER"



B: Switch off transmitter.



C: Rotate the transmitter wheel to right end and hold, Switch ON transmitter, red light is on. Rotate wheel back to neutral position slowly, red light is blinking.



D: Rotate the transmitter wheel to left end, then rotate wheel back to neutral position slowly



E: Pull trigger back to rear end, then allow trigger back to neutral position slowly.



F: Push trigger to forward end, then allow trigger back to neutral position slowly.



G: Push transmitter button "D.OPEN", the blinking red light will change to staying bright.



H: Switch on "POWER" on receiver box. Now receiver box blue light will be staying bright. This means BIND process complete successfully.

## BAIT BOAT OPERATION BAITING



A: Firstly switch on transmitter, then open hatch on cabin, switch on receiver box power, make sure transmitter red light and receiver box blue light are staying bright.



B: Close hopper door.



C: Load 500g bait inside the hopper.



D: Place boat on water, drive boat to your desired spot.



E: Push "D.OPEN" button on transmitter, release bait and drive boat back.

## DELIVERY HOOK



A: Insert your hook by passing it under the boat and up through the hopper. Close the hopper door manually from below, ensuring "click" closure.



B: Place boat evenly, pull line straight out from hopper.



C: Drive boat to chosen spot and push "D.OPEN" button to release hook and drive boat back.

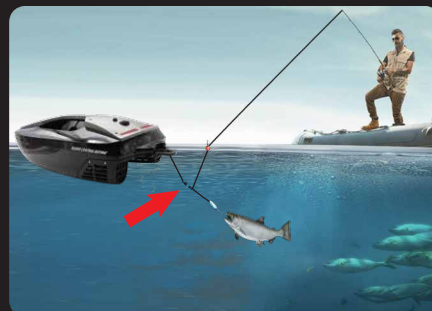
## MAGNETIC PTHOOK INSTRUCTION



A: Use line to attach the bigger one magnetic pothook to the rear support of boat. (NOTE: Line length within 100mm)



B: Use the other smaller magnetic pothook to attach to fishing line. Two magnetic pothook connect together.



C: Drive boat to chosen spot, when fish bite hook, force from fish or from fishing rod will disconnect the two magnetic pothook. Then use fishing rod to pull fish back.  
D: Drive boat back to shore.

## NIGHT OPERATION



A: Switch on navigation LED light



B: Forward Blue LED light, Rear Red LED light. To tell direction when drive boat.

## LOW BATTERY WARNING

When boat battery running low:

A: no matter you switch on LED lights or not. The Navigation LED lights will keep blinking.

B: When LED lights begin to blink. The boat battery will still allow you have 10 minutes time to drive boat back(driving distance around 400meters). you need to drive boat back immediately to recharge the boat battery.

## UPGRADE FUNCTION

### UPGRADE WITH WIRELESS UNDERWATER CAMERA

(NOTE:Part No.:3901,optional purchase part,not included)



Kits content of wireless underwater camera



A: Charging the batteries for cable wheel and display.



B: Use stickers on balance weight to mount balance weight inside the forward of carbin.



C: Use camera cable to thread through the big hole on boat handle, then reach to the forward cabin. Connect with receiver box's waterproof connector.



D: Cut the big rubber seal, to wrap the camera cable and mount on the big hole to prevent water getting in.



E: Mount the cable wheel at rear support of boat as photo shown.



F: Mount display on transmitter as photo shown, Switch on display.



G: Install battery inside cable wheel and close battery compartment.

H: Now you can see the images on display.



I: Use the transmitter's camera rotate knob to control the camera cable length. (NOTE: Cable line total length 5.5meters, control cable length 5meters)

## IMPORTANT NOTICE

- 1) This camera can be used to find fish or detect water depth(within 5 meter depth maximum).
- 2) Coordinate with magnetic pothook, you can observe fish biting hook via display.
- 3) DO NOT operate the camera rotate knob too fast, otherwise, you might get cable tangled.

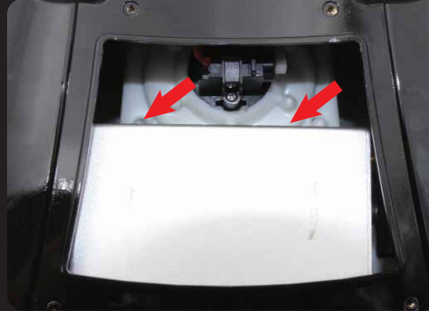


## UPGRADE WITH WIRELESS FISH FINDER

(NOTE:Optional part, not included. Select and purchase the suitable unit in market separately.)



A: Used supplied Allen Key to loose the 6pcs screw on boat handle.



B: Install the transducer inside the rear cabin, mount the transducer with sticker on position.



C: Use supplied specialized connector to connect with power cable of transducer. Connect the transducer's modified connector with power socket(12V 1A) from receiver box.

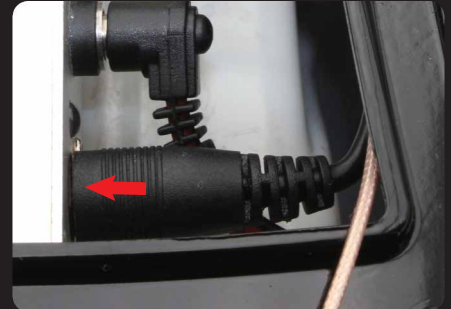
(NOTE: Make sure your fish finder power supply specification is 12V).



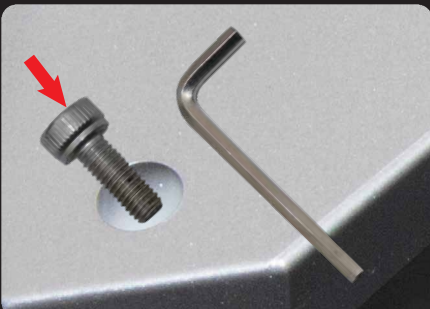
D: Install the antenna stand of transducer on small hole of boat handle.



E: Mount the sensor at rear support of boat, Use sensor's cable to thread through the big hole on boat handle.



F: Connect sensor's cable with transducer.



G: Install the boat handle back to position and tighten the 6pcs screws.



H: Cut the big rubber seal, to wrap the sensor's cable and mount on the big hole to prevent water getting in.



I: Install the antenna on mounted antenna stand. Now complete the installation of fish finder.

## UPGRADE WITH PORTABLE WIFI FISH FINDER

(NOTE:Optional part, not included. Select and purchase the suitable unit in market separately.)

Use fishing line to attach WIFI fish finder to the rear support of boat. Keep the line length within 100mm.

## MAINTENANCE & AFTERSALES SERVICE

### AFTERSALES SERVICE

During usage of bait boat, unexpected situation occur to damage boat. Check carefully which component damage, and purchase the spare parts base on last page of manual and easily replace for working properly again.

NOTE: Each components of boat are designed as modular construction. It is convenient for replacement components.

### MAINTENANCE NOTICE

A: Take transmitter's batteries and boat battery out when not use boat.  
B: Use fresh water to wash boat hull, hopper and left & right propeller.  
C: When obstacle or waterweeds get into the propeller covers, must clear them out before next time drive.

D: When not use boat in a long time, keep the hopper door open, if door keep in closure, the spring of door will deform.  
E: After using bait boat, open the hatch, let the boat air dry for one day.  
F: It is recommend to pack boat back to packaging box when intend not use for a long time.

## SPARE PART LIST

315119



Grey Hatch

315102



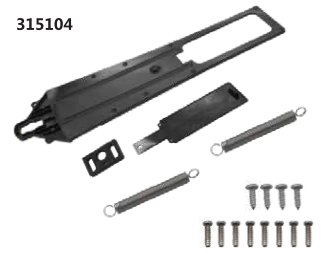
Front and rear LED lights

315103



Antenna seal+wire seal

315104



Bait hopper door

315105



bait hopper door lock set

315106



Receiver box

315107



Transmitter

315108



Left and right motor set

315109



Left and right propeller set

315110



4.8V 5000mAh NiMH battery

315111



Europe plug AC charger

315112



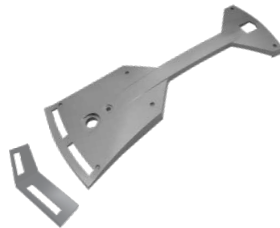
Hook and loop set

315113



Magnetic Pothook (PK4)

315120



Boat handle with Grey painting

315115



Hull with black painting and decal sticker

315116



Water seal EVA rubber for forward and rear cabin

315117



Left and right propeller cover

CHINA PATENT NO.:201830087925.3

HONG KONG PATENT NO.: PATENT PENDING

NOT INTENDED FOR PERSONS UNDER 14 YEARS OF AGE,  
UNLESS CLOSELY SUPERVISED BY AN ADULT.

JOYSWAY HOBBY (HK) LTD. ALL RIGHTS RESERVED



PLEASE KEEP THIS INFORMATION FOR FUTURE REFERENCE