

Thank you for purchasing a CIU-2.

The CIU-2 is a USB interface for communications between Link supported devices and a Windows computer.

Notes

- Please read this manual thoroughly before using your CIU-2.
- Store this manual in a safe place where it can be accessed at any time.

***A 500mm extension cord is supplied with the CIU-2.**

- Reproduction of all, or part, of the contents of this manual without prior written permission is prohibited.
- The contents of this manual are subject to change without prior notice.
- The contents of this manual should be complete, but if you find any errors or unclear points, please contact us.
- Futaba will not be responsible for the results of use of devices by the customer.

*Windows is registered trademark of Microsoft Corporation.

Specifications

(Specifications and ratings are subject to change without prior notice accompanying technological developments.)

- | | | | |
|---------------------|------------------------------------|--------------------------|-------------------------|
| • Interface | : USB Rev1.1 compliant | • Operating environment: | |
| • USB connector | : USB Series A connector | Temperature | -10 ~ 50degrees Celsius |
| • Operating voltage | : 5.0V ±0.2V (USB bus power) | • Dimensions | : 18.2 X 56.5 X 9.0 mm |
| • Current drain | (At connection, idle): 12.3 ±2.0mA | • Weight | : 7.5g |
| | | • Applicable OS | : Windows Vista/XP/2000 |

*The PC must have a USB port (Type A).

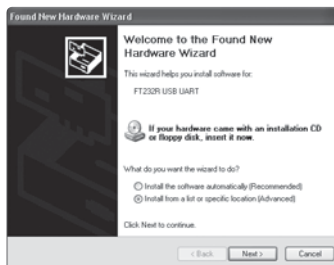
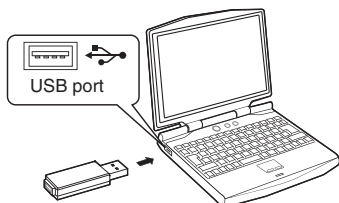
Drivers and Link programs must be installed.

- To use the CIU-2, drivers must be installed.
 - For communication and setting, Link programs corresponding to each device must be installed.
- Install the drivers and Link programs available on the dealer's website.

Connecting and disconnecting the PC and CIU-2

Connection

1. Turn on the PC power.
2. Connect the CIU-2 to the USB port of the PC.
3. When the CIU-2 is first connected to the PC; the "Found New Hardware Wizard" shown at the right is displayed. Install the drivers downloaded from the dealer's website.

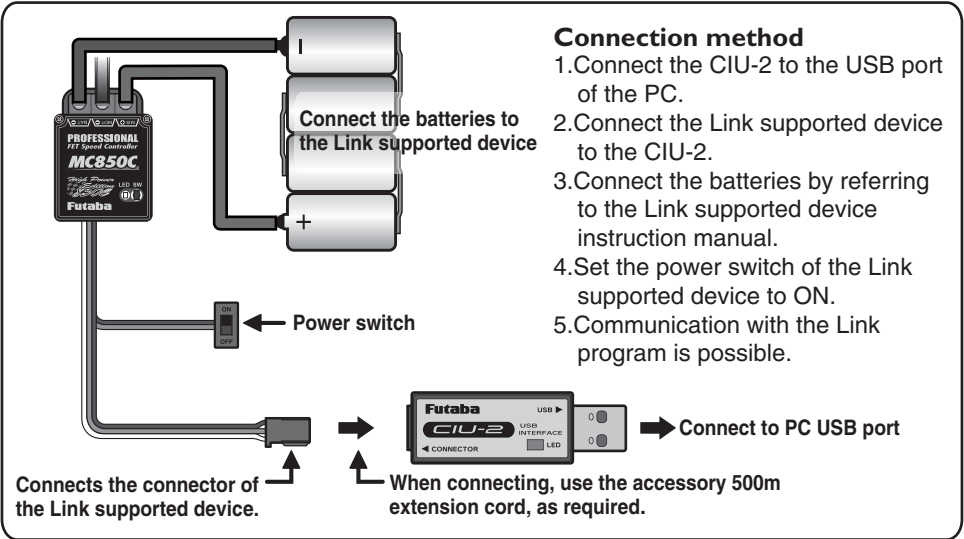


Disconnection

The CIU-2 can be disconnected even while the PC power is on. However, do not disconnect the CIU-2 while it is communicating with a Link supported device.

Example of connection to Link supported device

(The figure below is an example of connection to an MC850C.)



Usage Precautions

⚠ WARNING

⊘ Do not disassemble the CIU-2. Do not open the CIU-2 case.

Opening the case may damage the PC board. In this case, PC assembly replacement or repair will become impossible. There is also the danger of fire and electric shock.

⊘ Do not expose the CIU-2 to water or other liquids. Do not touch the CIU-2 when your hands are wet.

Water droplets entering the CIU-2 may cause trouble. There is also the danger of fire and electric shock.

⚠ CAUTION

⊘ Do not drop or expose the CIU-2 to strong shock.

It may cause trouble.

⊘ Do not set anything on top of the CIU-2.

It may cause trouble.

⊘ Do not touch the connectors with your hands. Also, do not connect a dusty or dirty connector.

It may cause trouble.

① Handle the PC and peripheral devices in accordance with the instruction manual and cautions and warnings given in the instruction manual of each product.

Special Markings

Pay special attention to the safety at the parts of this manual that are indicated by the following marks.

Symbol: ⊘ : Prohibited

① : Mandatory

Mark	Meaning
⚠ WARNING	Procedures which may lead to a dangerous condition or cause death or serious injury to the user if not carried out properly, or procedures where the probability of superficial injury or physical damage is high.
⚠ CAUTION	Procedures where the possibility of serious injury to the user is small, but there is a danger of injury, or physical damage, if not carried out properly.

<When requesting repair>

Before requesting repair, read this instruction manual again. When there is an abnormality, request repair to your local Futaba dealer.